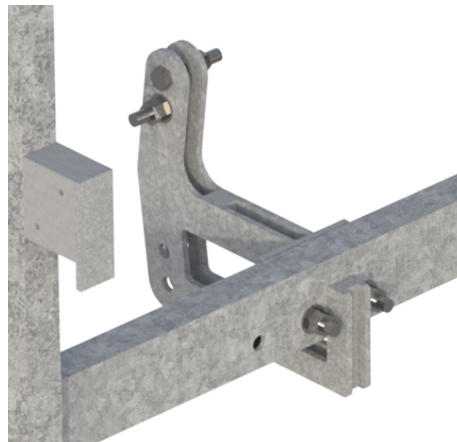


WALK THRU C-STIRRUP



Double Groove Sheaves with Stainless Steel Bearings



Adjustable Hoist Mounting Bracket Accommodates Most Hoist Models



DESCRIPTION

Stable! The high profile design of the Walk Thru C-Stirrup provides excellent stability, especially for workage applications (1m or 2m) and while using porch brackets.

Versatile! The stirrup will mount virtually anywhere along the length of the platform to align perfectly below the rigging points. Adjustable hoist mounting bracket located on the outside of the platform has 4 different positions to accommodate most traction hoist models and allows for maximum working space. Ready for use with an optional secondary wire rope.

SPECIFICATIONS

Part No.: 934111

Load Capacity: 1,250 lb (also approved for 1,500 lb when using a BISOMAC 210 with overload)

Dimensions:
 Default: 94.17" x 27.75" x 41.12" (HxWxD)
 Collapsed: 101" x 27.75" x 28.75" (HxWxD)

Weight: 147 lb

Construction: Steel

Finish: Galvanized